

Exercise

SF	A equals	1
B		2
C		3
D		4
E		5
F		6
G		7
H		8
I		9
J		10
K		11
L		12
M		13
N		14
O		15
P		16
Q		17
R		18
S		19
T		20
U		21
V		22
W		23
X		24
Y		25
Z		26

then:

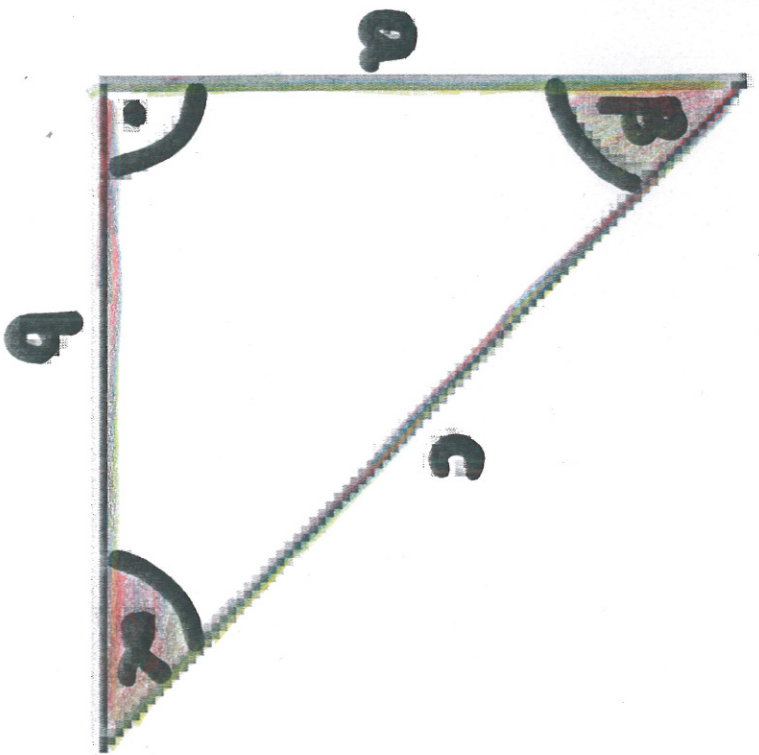
$$K+N+O+M+L+E+D+G+E = \underline{\hspace{2cm}} \%$$

$$H+A+R+D+M+O+R+K = \underline{\hspace{2cm}} \%$$

Both are important,
but fall just short of 100%.

But

$$A+T+T+I+T+U+D+E = \underline{\hspace{2cm}} \%$$



a - przypo prostokątna przyległa do kąta β (przeciwległa do α)

b - przypo prostokątna przyległa do kąta α (przeciwległa do β)

c - przeciwprostokątna

$$\sin \alpha = \frac{a}{c}$$

$$\sin \beta = \frac{b}{c}$$

$$\cos \alpha = \frac{b}{c}$$

$$\cos \beta = \frac{a}{c}$$

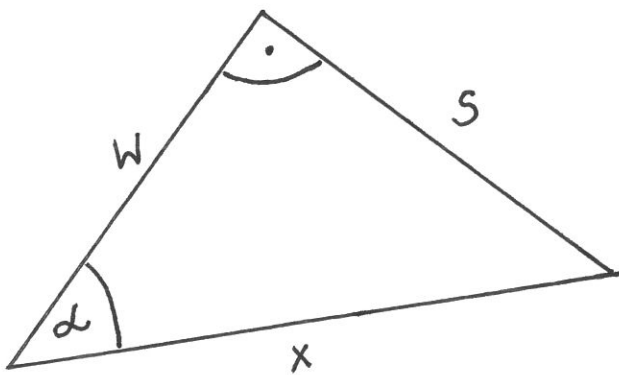
$$\operatorname{tg} \beta = \frac{b}{a}$$

$$\operatorname{tg} \alpha = \frac{a}{b}$$

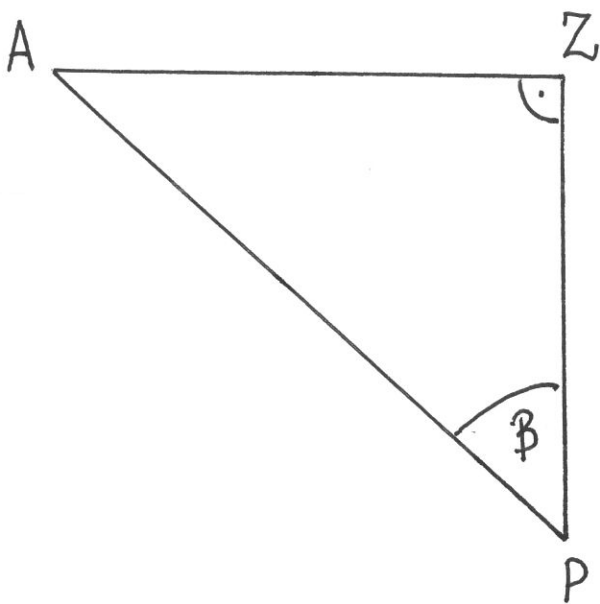
$$\operatorname{ctg} \alpha = \frac{b}{a}$$

$$\operatorname{ctg} \beta = \frac{a}{b}$$

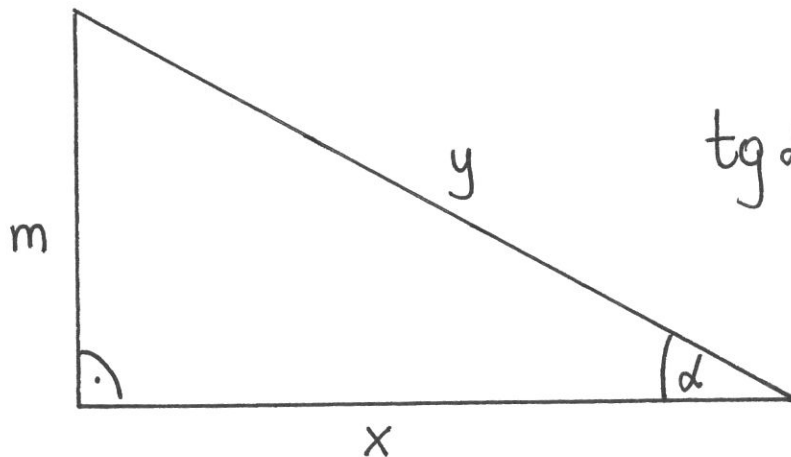
Zadanie
uzupełnij:



$$\operatorname{tg} \alpha = \text{---}$$



$$\operatorname{tg} \beta = \text{---}$$

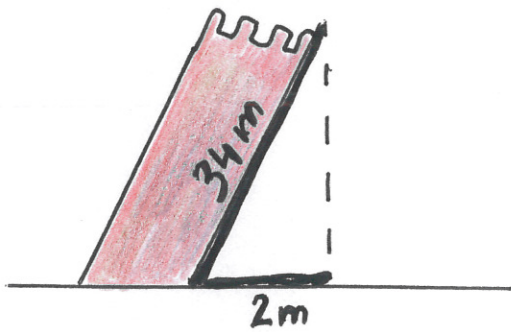


$$\operatorname{tg} \alpha = \text{---}$$

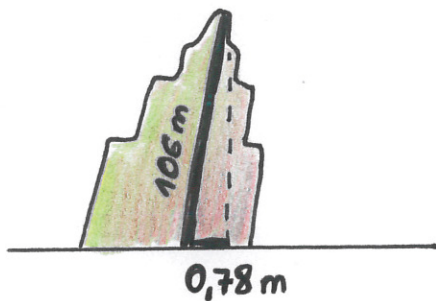
Zadanie

Oblicz cosinus kąta odchylenia od pionu:

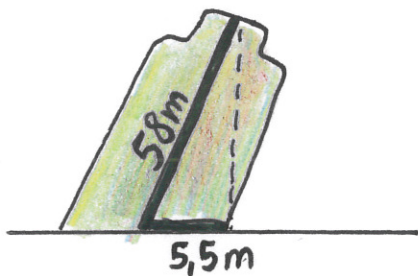
a) Krzywej Wieży w Żabkowie



b) wieży klasztoru na Jasnej Górze



c) Krzywa Wieża w Pizie



d) Krzywa Wieża w Toruniu

